



Knowle Cottage

Taggs Knoll, Bamford

Hope Valley, S33 0BQ

Saxton Mee

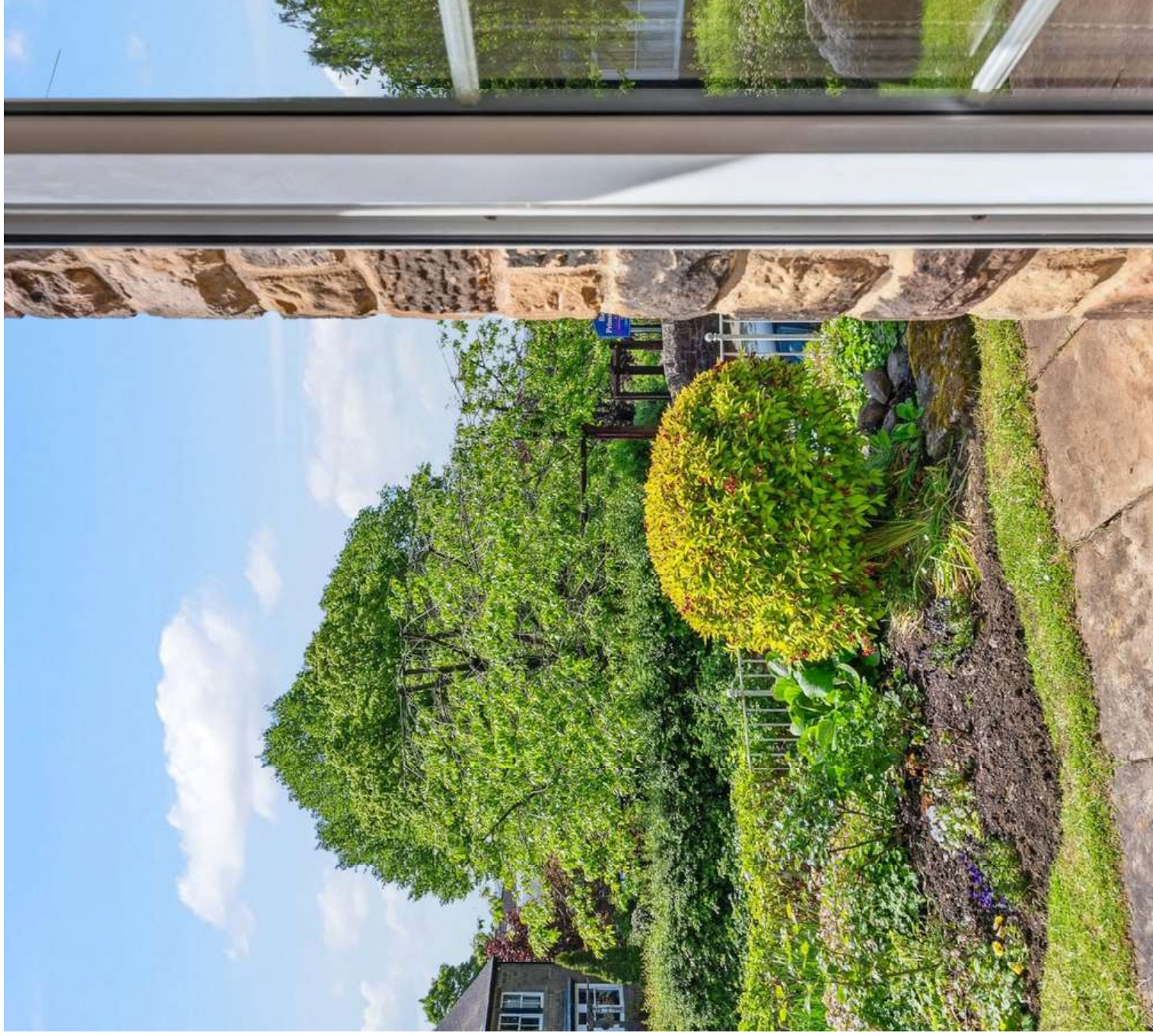
KNOWLE COTTAGE, BAMFORD, HOPE VALLEY

Situated just off the centre of this very popular Peak District village, in a quiet location, a most attractive and charming extended detached cottage, originally dating back to the 17th Century and extended in the 1950's, the main residence with three bedrooms, and the Annex comprising a large one-car garage and storage area with a bedroom / studio apartment for 1-2 people above, ideal for a teenager, dependent relative, visitors or to let out to create additional income



KEY FEATURES

- Detached extended cottage dating back to the 17th Century with later addition
- Adjoining Annex called The Croft comprising large one-car garage and storage area and studio apartment
- The Croft is ideal for teenagers, dependent relative, visitors or to provide additional investment income
- Very attractive property retaining some lovely features with old Gritstone fireplace and exposed beams
- Lovely quiet village location slightly elevated with spectacular views
- Lovely entertaining terrace with great views
- Bamford Village has good amenities, local train station, pubs and restaurants and is close to the Sickleholme Golf Club
- Beautifully landscaped and well maintained garden



GROUND FLOOR

Entrance lobby, reception hall opening out into a dining area with feature exposed beam and oak Parquet flooring, sitting room with a magnificent Gritstone fireplace and multi-fuel stove set upon a stone hearth, exposed central beam to the ceiling and double French windows to the side leading out to a lovely outside entertaining terrace.

Breakfast kitchen, good sized room with a range of base and wall units, stable door and lovely open views to the front overlooking Bamford and the wider Hope Valley and having a side entrance porch. Rear utility room with washbasin and storage space, external door and separate W.C.





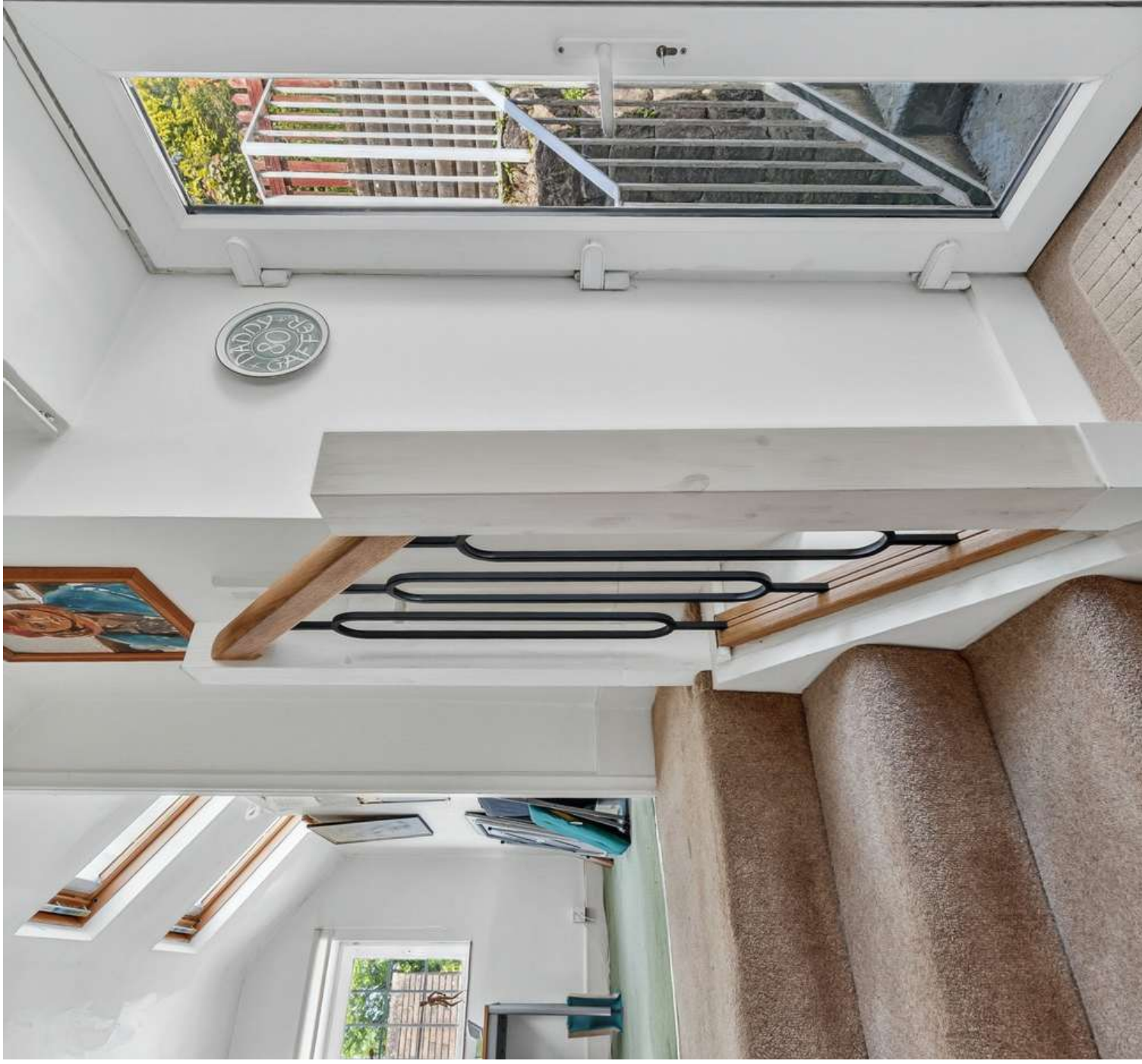






FIRST FLOOR

On the first floor half landing area with door leading outside to the rear of the property, bedroom one being a lovely large room with superb views over the valley, further landing, bedroom two with recess storage cupboards, bedroom three with double wardrobes and lovely views over the valley, bathroom with full suite and separate shower cubicle.







THE CROFT AND EXTERIOR

Outside driveway providing off road parking and giving access to The Croft, comprising large garage with roller shutter door, side access to an entrance lobby, and shower room with full suite, staircase leading up to first floor to a large studio bedroom / sitting room of very generous proportions with lovely open views over the surrounding countryside, gas convector heater and small kitchenette to one end of the room, gas central heating upstairs and in the shower room downstairs.

The garden to the front and side is beautifully landscaped and planted and very well maintained with lawned area, very well stocked floral borders and a magnificent Wisteria to the front of the property.

Lovely side garden with specimen shrubs and plants creating a lovely setting. To the left side of the property there is a large flagged courtyard terrace area and a staircase giving access to a rear terrace and behind the property which leads round to the side garden.





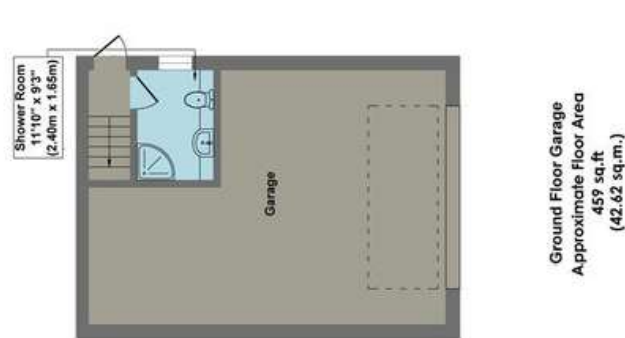
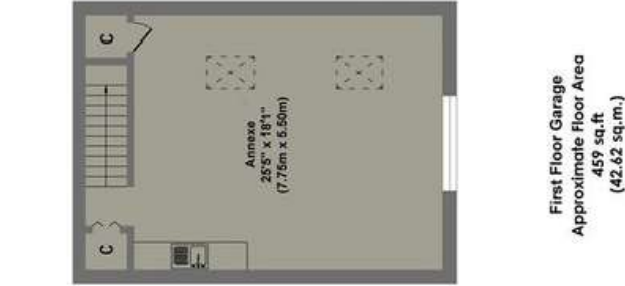
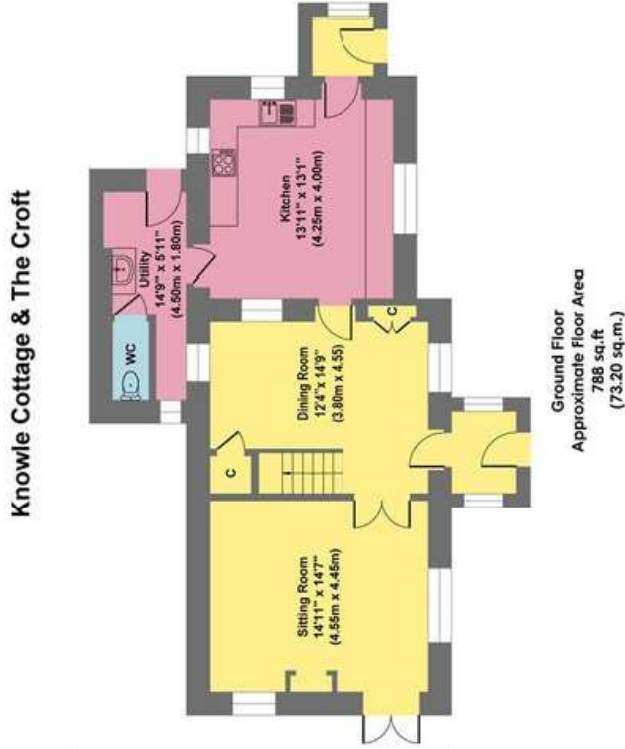
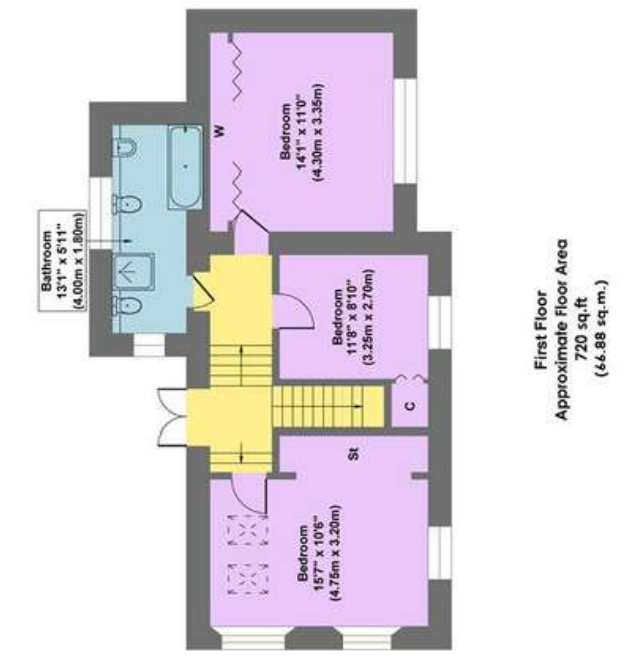












Approx. Gross Internal Floor Area 2426 sq.ft / 225.32 sq.m

Illustration for identification purposes only. Measurements are approximate, not to scale



For further information please
telephone Hathersage on 01433 650009
or email

James Mee - james.mee@saxtonmee.co.uk
or Jill Reeves - jill.reeves@saxtonmee.co.uk

While we endeavour to make our sales particulars fair, accurate and reliable, they are only a general guide to the property and, accordingly, if there is any point, which is of particular importance to you, please contact the relevant office. SERVICES: The Agents have not tested any apparatus, equipment, fittings or services and so cannot verify they are in working order. The buyer is advised to obtain verification. MEASUREMENTS: Please note all the measurement details are approximate and should not be relied upon as exact. FLOORPLANS; Plans are for guidance purposes only and under no circumstances should they be relied upon for use in planning carpets and other such fixtures, fittings or furnishings.